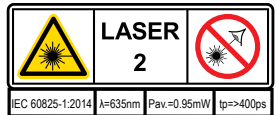


www.disto.com

User Manual:



SAP no. 962158B



Charging

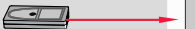


➔ ON

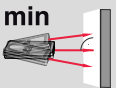


➔ OFF

2 sec



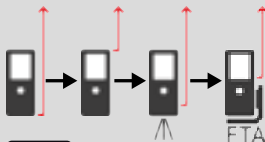
2 sec



- 1 Status bar/Function name
- 2 Haircross for aiming
- 3 Main line (result)
- 4 Active function
- 5 Selection keys linked to the symbol above
- 6 ON/DIST
- 7 Clear/OFF
- 8 Navigation
- 9 Add
- 10 Reference
- 11 Functions/Settings screen
- 12 Zoom
- 13 Subtract
- 14 Equal/Confirm

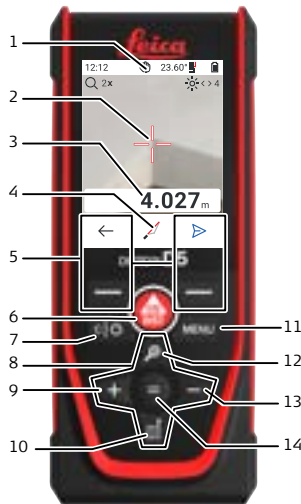


Reference



Quick Start

Leica DISTO™ D5



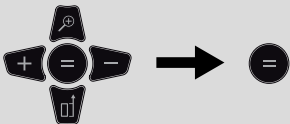
- when it has to be right

Leica
Geosystems

MENU Functions



MENU → 1 × click



	Distance measurement
	Area
	Volume
	Triangle area
	Smart horizontal mode
	Level
	Pythagoras
	Stake-out
	Timer
	Height tracking
	Memory
	Slope
	Height profile

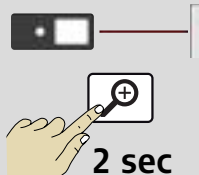
MENU Settings



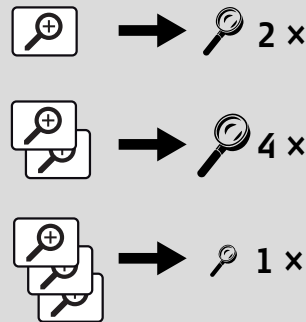
MENU → 2 × click

	Tilt units
	Distance units
	Screen rotation
	Beep
	Bluetooth
	Bluetooth settings
	Display illumination
	Favorites
	Keypad lock
	Tilt calibration
	Information/Serial number
	Distance offset
	Reset device
	Time
	Gesture control
	Language
	Shutdown time
	Pointfinder

Pointfinder On/Off



Zoom



Status Bar

12:22 5.30°

12:22	Time
	Gesture control
	Bluetooth® active
	Measuring reference
5.30°	Inclination
	Battery status
	Distance offset set

User Interactions

	Measuring indication	
	Confirm	
	Back	
	Repeat	
	Bluetooth® send	
	Bluetooth® navigation On/Off	
	Help	
	Delete	
	Use navigation, confirm with equal key	
	Set back to 0 (Offset, Stake-out)	