

ForestryVac[®]

USER MANUAL



www.spinaclean.co.uk

INNOVATION FOR A FASTER, SAFER FUTURE

AN EFFICIENT, SAFE AND MOBILE PEST CONTROL VAC

INCLUDED AS STANDARD



8 ELITE CLAMPED POLES & HALF POLE

8M 50MM FLEXI HOSE



VAC & POLE CUFFS



HOSE BAG



4X SELF-SEALING FILTER BAGS



ELITE END TOOLS, ALU SCRAPER TOOL, STRAIGHT END TOOL & VIPER TOOL



CARRY BAG FOR POLES & ACCESSORIES

Thank you for your purchase

Contents

PACKAGE CONTENTS.....	2
KEY SYSTEM FEATURES.....	4
MACHINE SPECIFICATION.....	4
START THE ENGINE.....	5
SUCTION PORT.....	6
REMOVE VACUUM HEAD.....	6
REMOVING & REPLACING FILTER BAG.....	7
SETTING UP.....	8
ASSEMBLING POLES.....	9
HEPA FILTER MAINTENANCE.....	10
8M FLEXI HOSE.....	10
BEST PRACTICE & TROUBLE SHOOTING.....	11



KEY SYSTEM FEATURES



SPECIFICATIONS

MACHINE SPECIFICATION

Motor wattage: 2400 watt (5.8HP Honda petrol engine)

Water lift: 98"

Air flow movement: 7,166 LPM

Cyclonic entry port: 50mm

Container: 78 Litre

Weight: 92kg
Generator with frame & wheels: 76kg
Steel drum with motor head: 16kg

Cable length: 8.5m

Dimensions (cm): 104(l) x 62(w) x 130(h)

HEPA (High Efficiency Particulate Air Filter)

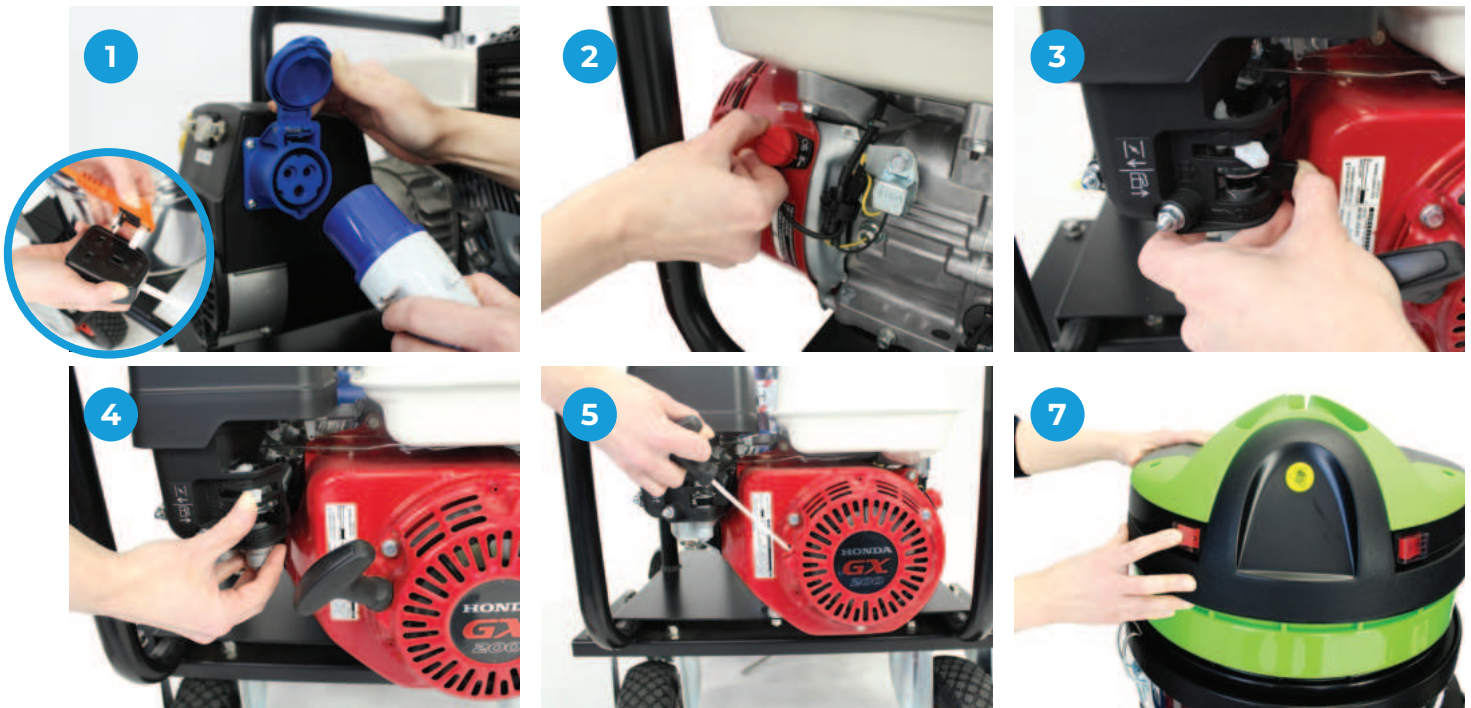
TYPE	CLASSIFICATION	EFFICIENCY	PENETRATION
HEPA	H14	99.995%	≤0.005%

STARTING THE ENGINE

i

Before starting the machine the user must be familiar with the engine starting and stopping procedure and any safety requirements stated in the Honda engine manufacturer's handbook supplied with the unit.

As an H-Class vacuum, all emptying and maintenance operations of ForestryVac, including removal of the dust collecting systems, must only be carried out by authorised personnel wearing suitable personal protection. Do not operate without the full filtration system fitted.



1

Take plug and plug into the generator socket

2

Turn switch to ON position

3

Ensure fuel is on (move black lever to the right)

4

Ensure choke is on (move grey lever to the left)

5

Pull starter grip lightly until resistance is felt, then pull lightly (do not allow the starter grip to snap back against the casing, return it gently to prevent damage to starter)

6

After 5-10 seconds, turn choke off (move grey lever to the right)

7

Turn on two button on vacuum head individually to power both motors

POWER OFF:

Pull start: Turn the ignition switch to OFF (O)

Fuel line: For transportation, close fuel line, move black lever to the left

SUCTION PORT



TO INSERT HOSE INTO SUCTION PORT:

1. Pull out the inlet cap
2. Push the hard cuff into the entry port on the drum
3. Once correctly inserted, the cuff will click/lock in place

TO REMOVE HOSE FROM SUCTION PORT:

1. To remove, slide out the green button on the side of the entry port to unlock
2. Push in the inlet cap back on (especially during transportation).

REMOVING VACUUM HEAD



TO REMOVE THE VACUUM HEAD:

1. Ensure the vacuum head is turned off (A)
2. To release the clamps (B) pull the underside of the clamp out, then lift the top of the clamp away from the head
3. Lift the vacuum head (B) from the drum (C). Place the vacuum head (A) in a safe location

TO REPLACE THE VACUUM HEAD:

1. Lift the vacuum head (A) and place onto the drum (C)
2. Secure the side clamps (B) to the vacuum head (A)

REMOVING/REPLACING SELF-SEALING FILTER BAG



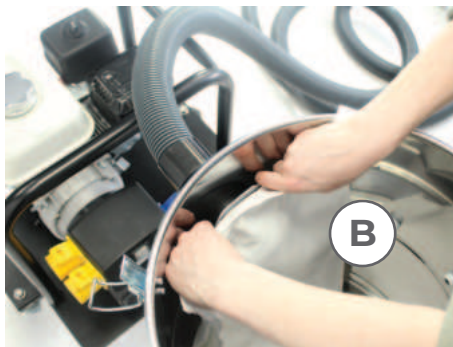
When the yellow warning light turns on (A) it will mean one of 3 things:

- Self-sealing filter bag is FULL
- Clogged cartridge filter
- Flexible hose or pole is clogged or warped



TO REMOVE THE SELF-SEALING FILTER BAG:

1. Ensure the vacuum head is turned off
2. To release the clamps, pull the underside of the clamp out, then lift the top of the clamp away from the head
3. Place the vacuum head down on the ground gently
4. Hold the top of the self-sealing filter bag (B) and pull it away from the black port (C) gently



TO INSERT A NEW SELF-SEALING FILTER BAG:

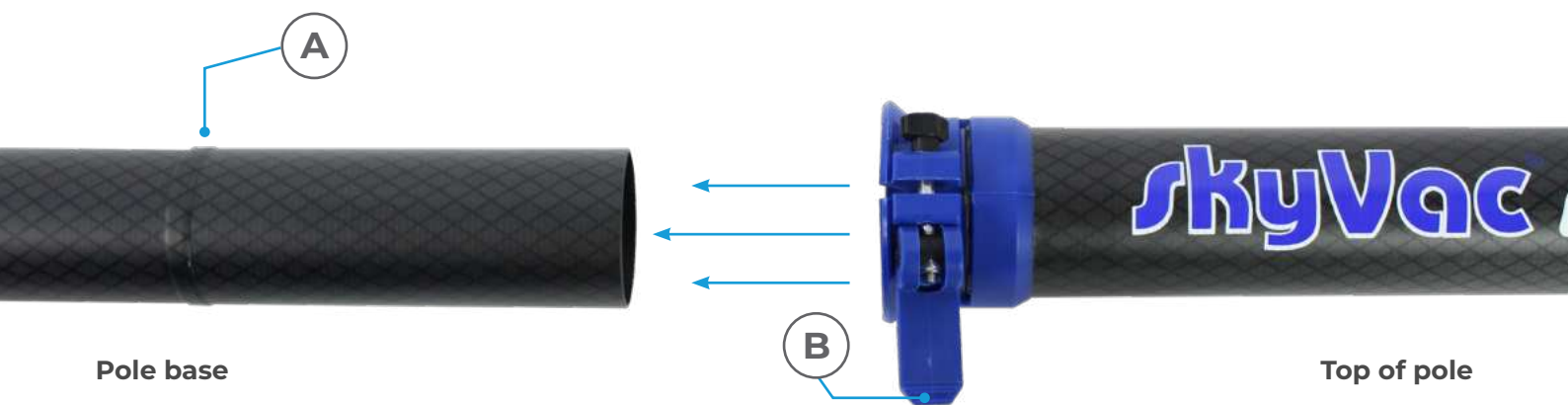
1. Place the new self-sealing filter inside the drum
2. Push gently onto the black port inside the drum (C)
3. Keep the bag strap (D) outside of the drum



SETTING UP



- 1**
Insert end tool into the neck of tool holder
- 2**
Attach tool holder to head of the first pole
- 3**
Build poles up to the required height, starting at the top pole (with the end tools attached) and working down. Add each new pole below the previous
- 4**
Rest poles against the side of a tree whilst building your poles
- 5**
Once the poles are assembled to the height required, attach the soft end cuff of the wire reinforced hose, onto the base of the pole.
- 6**
Switch on the ForestryVac.

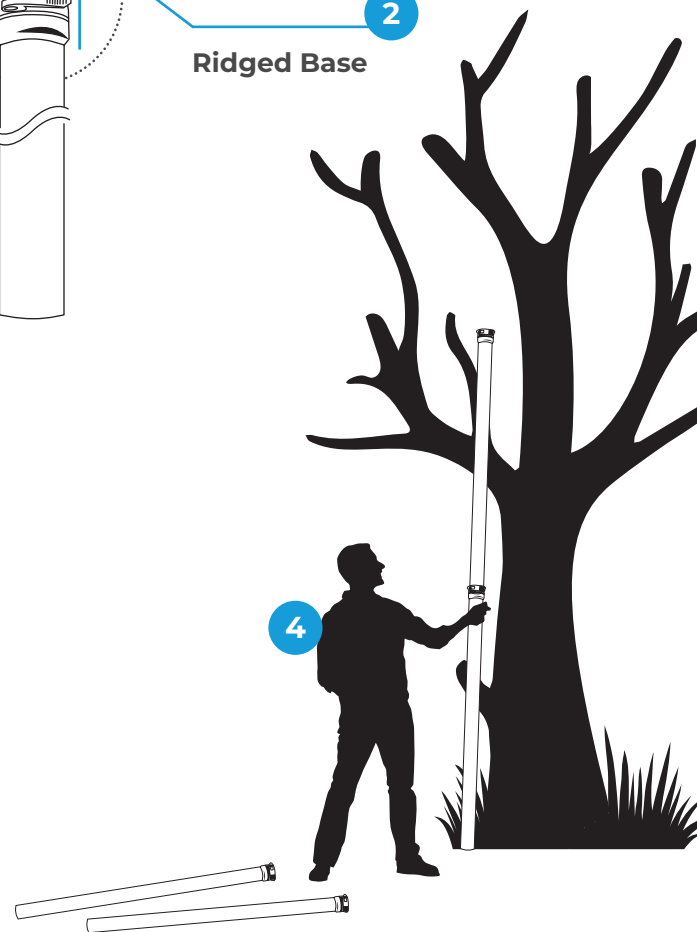
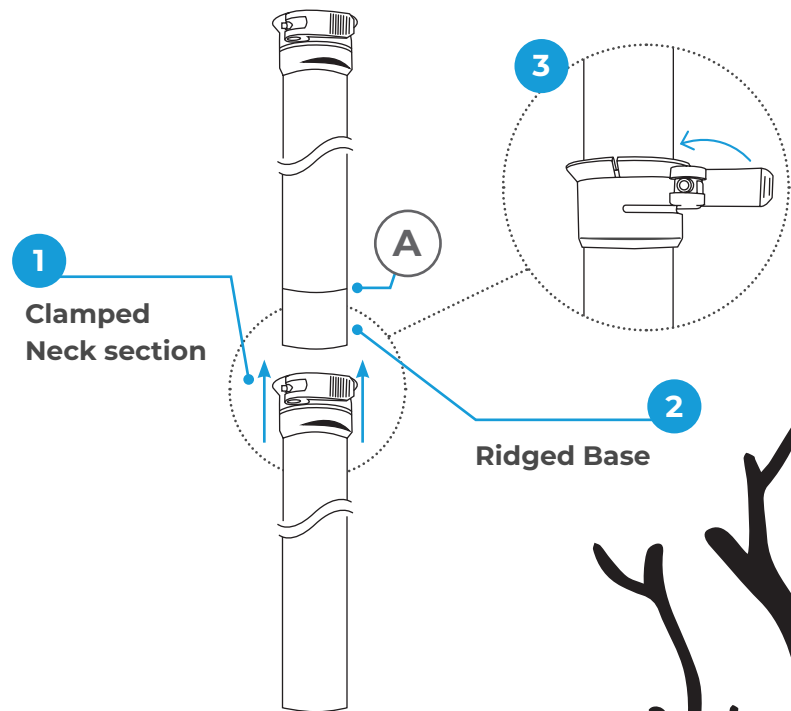


Pole base

Top of pole

Clamped poles features a 'Positive stop' or ridged edge (A) around the base of the pole. The ridge ensures that the pole base stops at the correct point when inserted into the unlocked clamped pole. Once the ridge is positioned inside the neck, the lever (B) can be pulled closed to secure the pole in place.

ASSEMBLING POLES



1

Slot the base of the top pole into the clamped neck section of the pole below

2

The ridge at the base of the pole (A) ensures the correct locking position

3

Once in position, secure in place with locking lever. Turn screw clockwise to tighten, anti-clockwise to loosen. Push clamp forward and down to lock, flip open to release

4

To achieve the desired height, slot your poles together, resting against the side of a tree

HEPA FILTER MAINTENANCE

HEPA (High Efficiency Particulate Air Filter)

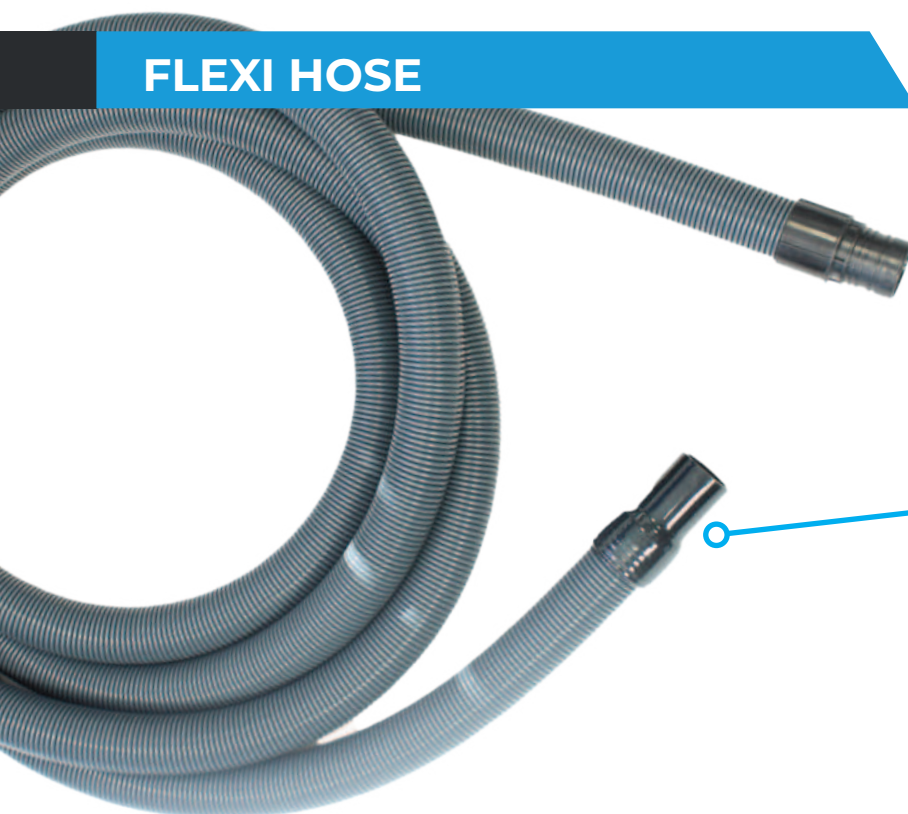
TYPE	CLASSIFICATION	EFFICIENCY	PENETRATION
HEPA	H14	99.995%	≤0.005%

NOTE:

1. The motor draws air into the engine, passing through the HEPA filter.
2. If the HEPA filter becomes clogged with dirt then air flow to the motor becomes restricted.
3. A dirty/clogged HEPA filter will affect your engine performance and can result in a loss of suction.
4. We recommend having a spare HEPA filter with your system, so you can alternate HEPA filter use. Replace when required.



FLEXI HOSE



HARD CUFF:

Screw on anti-clockwise to hose, and insert into the suction port

SOFT CUFF:

Screw on anti-clockwise to hose, and attach to base pole

BEST PRACTICE



1 Regularly inspect your filter for wear and tear.



3 Wear the appropriate PPE



2 Build your poles up against the side of a tree trunk - **DO NOT** assemble on the ground and then lift up.



4 Dispose of cartridge filter and self-sealing filter bags accordingly

TROUBLE-SHOOTING

SYMPTOM	POTENTIAL CAUSE	REMEDY
Loss of suction	Blocked filter or full drum	Clean filter and empty drum
	Blockage in flexi neck, poles, or vac entrance	Clear blockages
	Blockage at end tool	Gently tap end tool on a tree branch
Machine stopped working	Loss of power	Check power supply
	Ran out of fuel	Check fuel level
	Oil level engine cut out	Check grey dipstick for oil level

skyVac[®]

www.spinaclean.com

Unit 33, Cornwell Business Park, Salthouse Road, Brackmills,
Northampton, NN4 7EX. United Kingdom. Company No. 04506121

+44 (0)1604 968700 | info@spinaclean.com

PLEASE NOTE: The accuracy or completeness of product information is not guaranteed and is subject to change without notice.